

**AIMIA APP**

Operating instructions

Version: #1.0

Software-Version: 1.1.2

**AIMIA**  
Regent Lighting

# Table of contents

Usage Precautions _____	<b>01</b>	Light settings: detection interval and auto mode _____	<b>24</b>
AIMIA Overview _____	<b>02</b>	Light settings _____	<b>25</b>
Download & Installation _____	<b>04</b>	Light settings: Photo shooting _____	<b>26</b>
Distance between luminaire and product _____	<b>05</b>	Light settings: Customisation _____	<b>27</b>
Auto mode - detection interval _____	<b>06</b>	Light settings: Color Code _____	<b>28</b>
Registration and login _____	<b>07</b>	Light settings: Brightness _____	<b>29</b>
Create Shop _____	<b>08</b>	Setting the power _____	<b>30</b>
Store: Share and join _____	<b>09</b>	Factory Reset _____	<b>31</b>
Store Permissions _____	<b>10</b>	Picture of device _____	<b>32</b>
Store Management - Owner _____	<b>11</b>	Control of luminaire groups _____	<b>33</b>
Store Management - Admin _____	<b>12</b>	Creating / deleting a lighting group _____	<b>34</b>
Store Management - User _____	<b>13</b>	Group setting _____	<b>35</b>
Transfer administrator rights _____	<b>14</b>	Primary setting _____	<b>36</b>
Software-Update _____	<b>15</b>	Add devices to groups _____	<b>37</b>
Add new lights _____	<b>16</b>	Group management _____	<b>38</b>
Add multiple devices at one time _____	<b>17</b>	Control of all lights _____	<b>39</b>
Select application _____	<b>18</b>	Remove a luminaire from the app _____	<b>41</b>
Display goods item _____	<b>19</b>	Reset multiple devices at one time _____	<b>42</b>
Control of individual lights _____	<b>20</b>	Status display and troubleshooting _____	<b>43</b>
Settings _____	<b>21</b>		
Light settings _____	<b>22</b>		
Light settings : Auto-Mode _____	<b>23</b>		

# Usage Precautions

For color enhancement, please choose according to the corresponding product type or scene in the formula library, and pay attention to the contrail of color temperature and Color saturation when setting the color preference manually.

Color enhancement is only to restore the best color of the product, not to let the product deviate from its own characteristics, please, install it on the premise of complying with local laws, regulations and standards.

This color-sensing light fixture is equipped with a built-in camera for enhanced functionality. Please be aware that static live images are accessible at any time by the store owner and the authorized administrators in Bluetooth range via the accompanying app. This could include, but is not limited to, private, sensitive, or identifiable information, so careful consideration should be taken regarding user access to the app. Please also be mindful of what may be visible based on the direction the light fixture is aimed; we are happy to assist with providing advice regarding placement and aiming of light fixtures. By using this product, you acknowledge that the supplier accepts no responsibility for any misuse or unintended consequences resulting from the use of this product.

# AIMIA Overview

Functions	Description
Light On/Off	To switch ON or OFF
Light settings	Three ways of Light settings: Auto Mode(default), Take a picture, or Color Selection.
Take a picture	Take a picture of the target product and select an area on the photo then the light outputs recommended recipes.
Color Selection	User can tune color, saturation, color temperature and brightness of the light.
Auto Mode	Automatically provides the best CCT and color enhancement according to products detected by the built-in color sensor. By default, Auto Mode is "ON" and the device detects product automatically only when turn on the light. Product type is "Clothing & Accs"
Energy settings	Not activated by default, desired brightness and waiting period can be preset.
Brightness adjustment	To adjust the output brightness from 1 % to 100%, default at 100%
Wattage Settings	To adjust the wattage from 5W to maximum of the spotlight. Maximum wattage by default .
Software update	To OTA (Over the Air) update the firmware (software) on t he spotlights to the latest version
Group setting & Group control	To manage some spotlights in a same group and group control them ON/OFF, group light setting, and energy saving, auto mode, etc.
Primary setting	Select a device to be the Primary light in a group, when the Primary light changes, the Secondary light will follow.
Factory reset	To reset the light to initial settings, and the light will be removed from APP.

<b>Functions</b>	<b>Description</b>
View product position	View the product image and make sure product is in the center of image by moving light or product.
Store management	To create a store or join a store
Scene	Control multiple devices and groups to realize customized adjustment of color temperature and brightness.

# Download & Installation

To download the app, scan the QR code or search for "AIMIA" in the AppStore for iOS / Google Play Store for Android

## Google Play



## AppStore

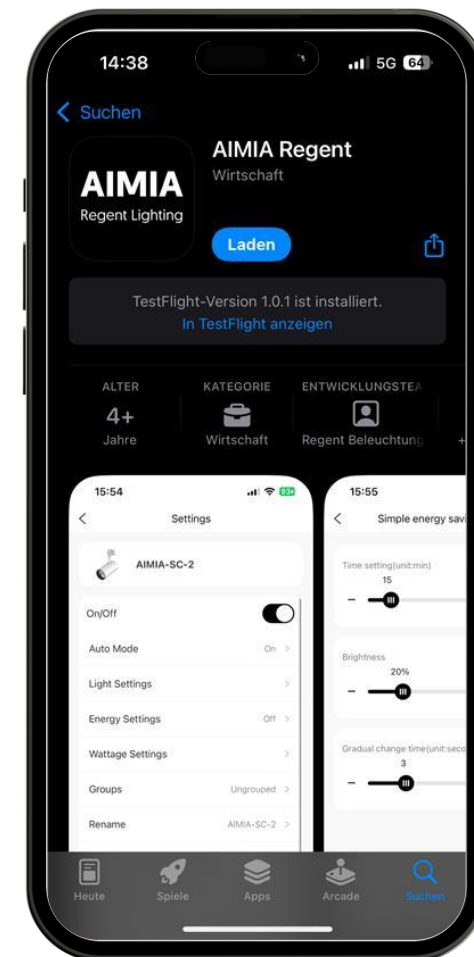


### App compatibility

iOs/iPadOS: 13.0 or newer

MacOS: 11.0 or newer and M1 chip

Android: V4.4 or newer Languages: English and simplified Chinese. (others for customisation)



# Distance between luminaire and product

## Large products

Recommended distance:  
0.8-2.5 metres

## Medium-sized products

Recommended distance:  
0.5-1 metre

## Small products (e.g. shoes)

Use of the app recommended ["Take photo" or "Customisation mode" function]



# Auto-Modus

## Recording interval

To achieve an optimum lighting result, align the central light cone of the spotlight to the centre of the product.

When Auto mode is activated, the object is detected at an interval of 20 minutes as standard.

Change the time interval:

Click on "Auto mode"

For the actual lighting purpose, we recommend setting the time in minutes.

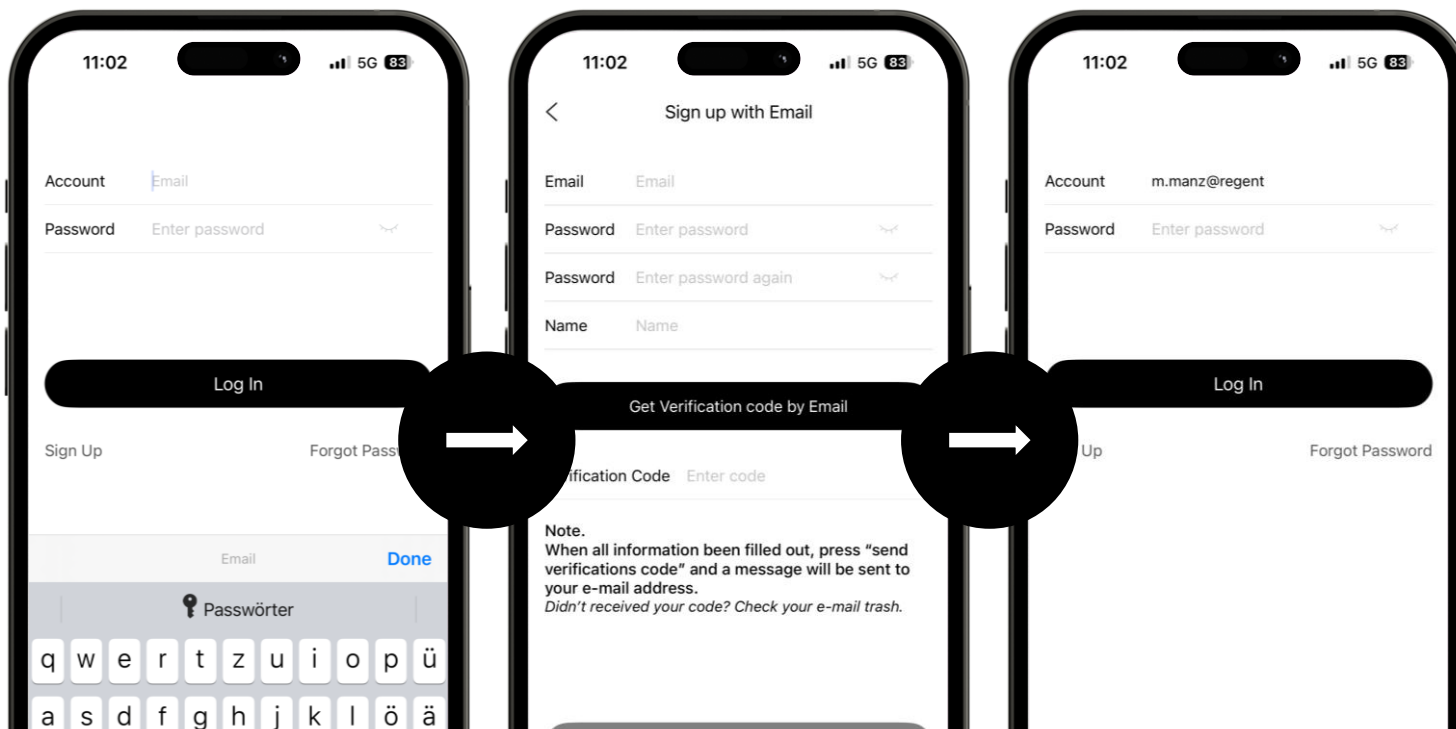
The interval can be reduced to a few seconds for demonstration and test purposes.





# Registration and login

1. Select «Sign up», to create an account and password
2. Follow the instructions to complete the registration and get to the "Login" page
3. To log in, use the e-mail address and password you have set

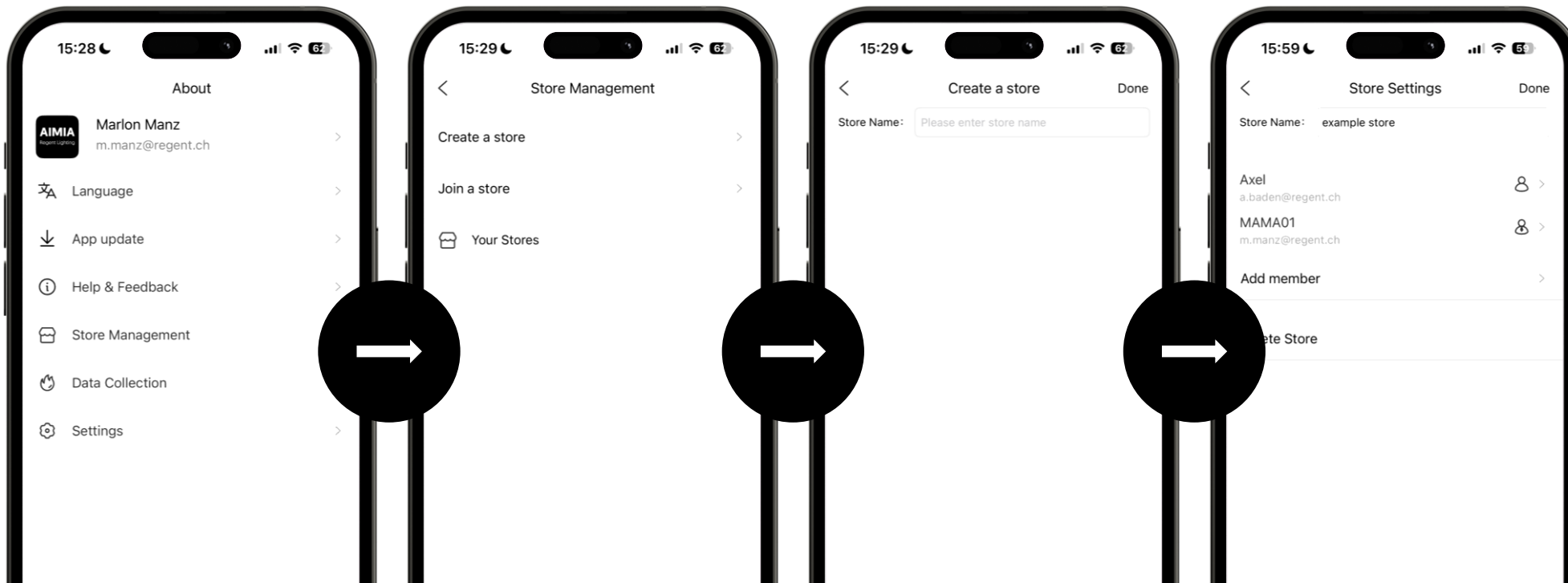


# Create a Store

Before adding luminaires for the first time, a shop must first be created.

Create a shop: "About" → "Store Management" → "Create a store"

If a shop is created as an administrator, other members can be invited to join.



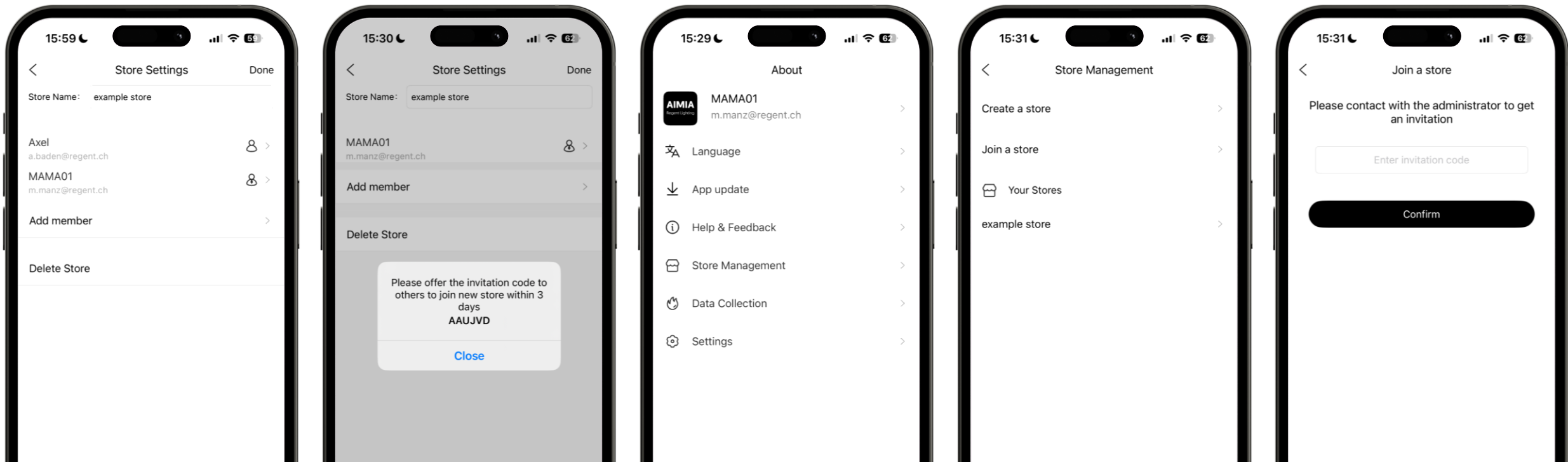
# Store: Share and join

Store approval: Select a store as administrator → "Add member" → Share invitation code

Join a store: "Join a store" → Enter and confirm the invitation code

Transfer administrator rights to another member: "Administrator transfer"

Note: Only an administrator has rights to add and set up devices and create groups



# Store Permissions



## Owner

Have full rights.



## Admin

Have full rights except transferring the Ownership of the store and deleting a Store.

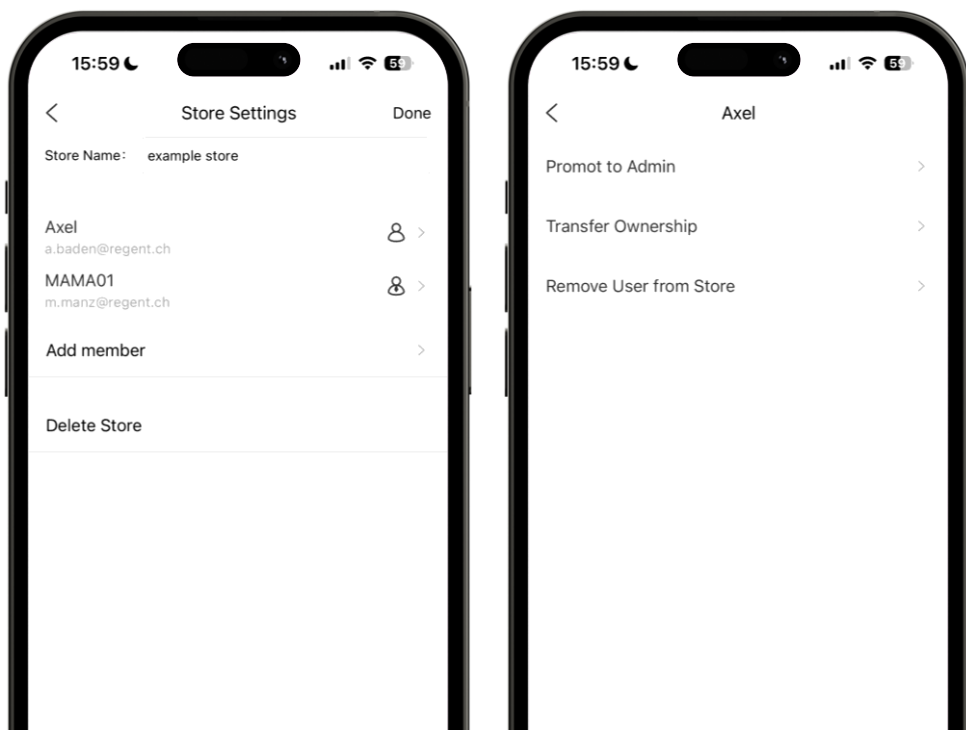


## User

- Limited access.
- As a user you can see added fixtures/units and current groups.
- Can't add or delete fixtures/units and groups.
- Can't view product position.

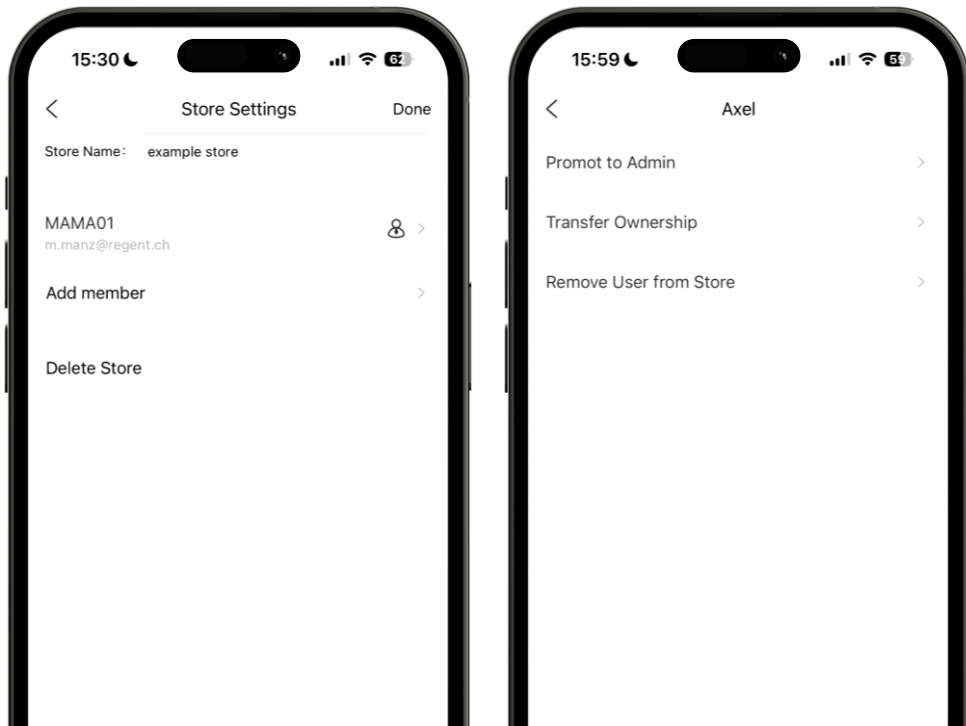
# Store Management - Owner

- Tap a User account.
- The Owner can grant another User the Admin role.
- The Owner can transfer the ownership to another User.
- The Owner can remove a User from the Store.



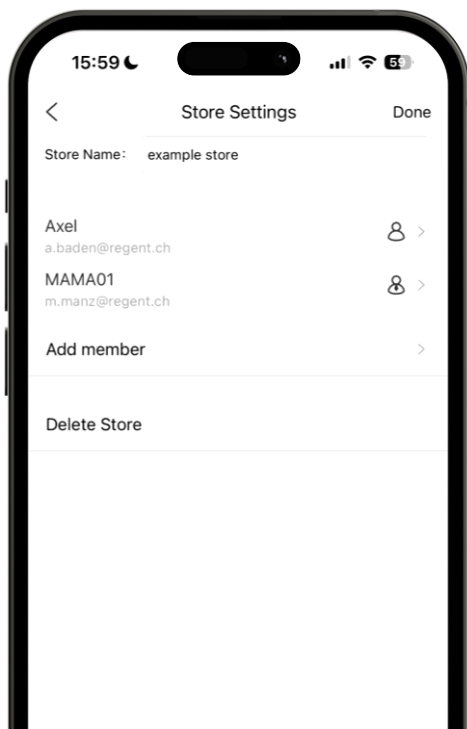
# Store Management - Admin

- The Admin can add members to the store.
- Tap a User account.
- The Admin can grant a User the Admin role.
- The Admin can remove a User from the Store.



# Store Management - User

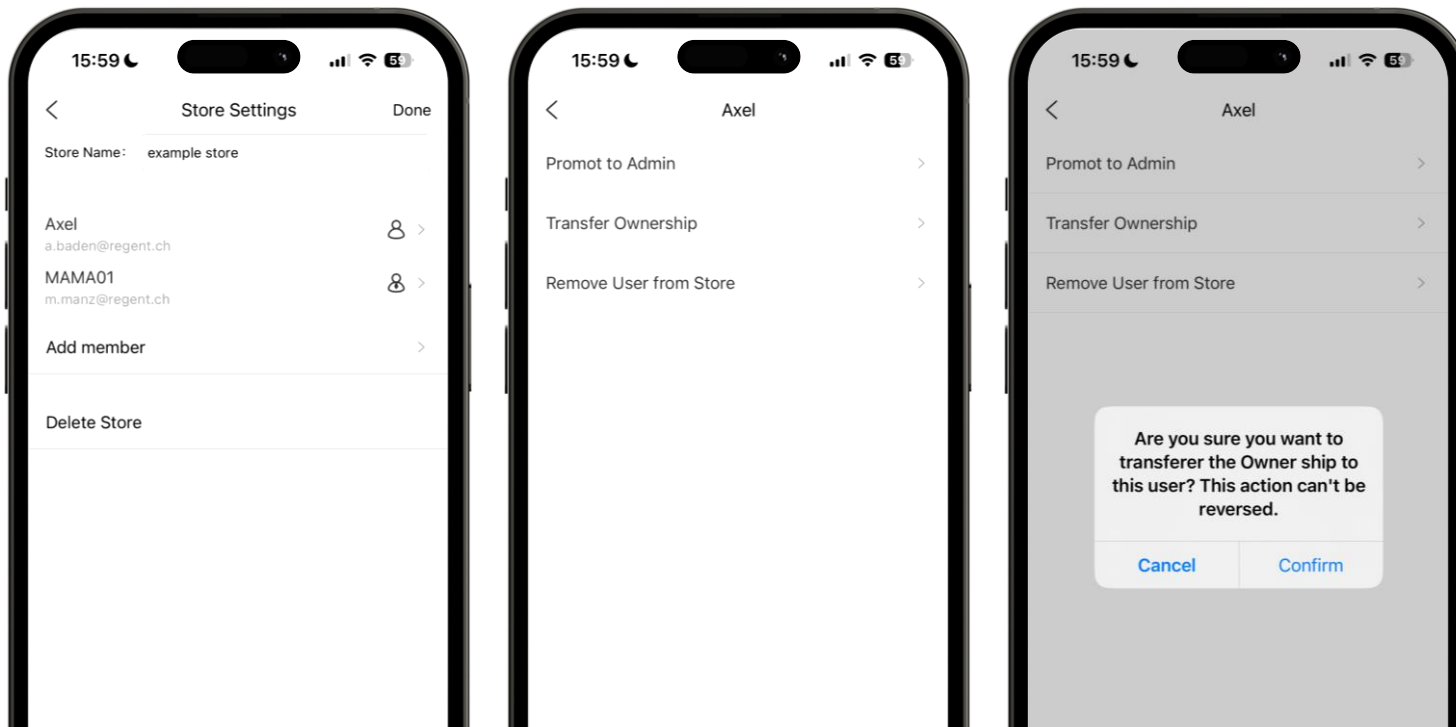
- The User can't add members to the store.
- The User can't tap any of the added users, admins or the owner.





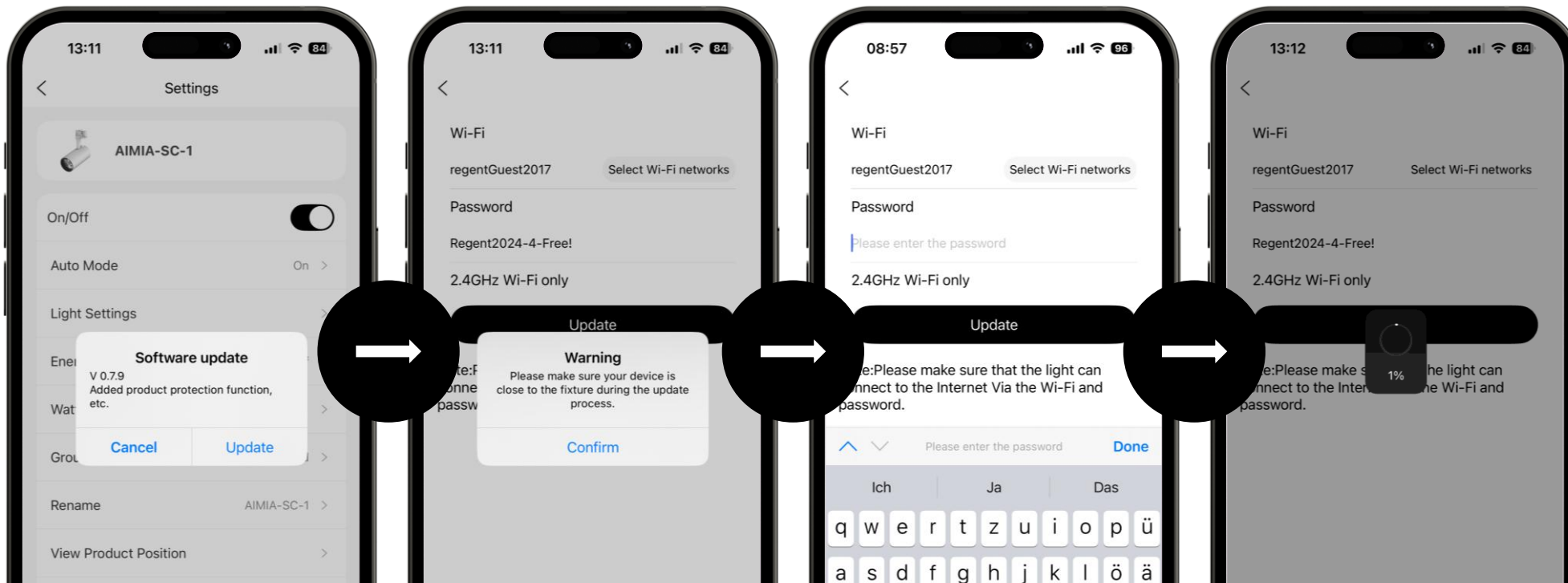
# Transfer administrator rights

Administrator: «Administrator transfer» → Select member → «Confirm»



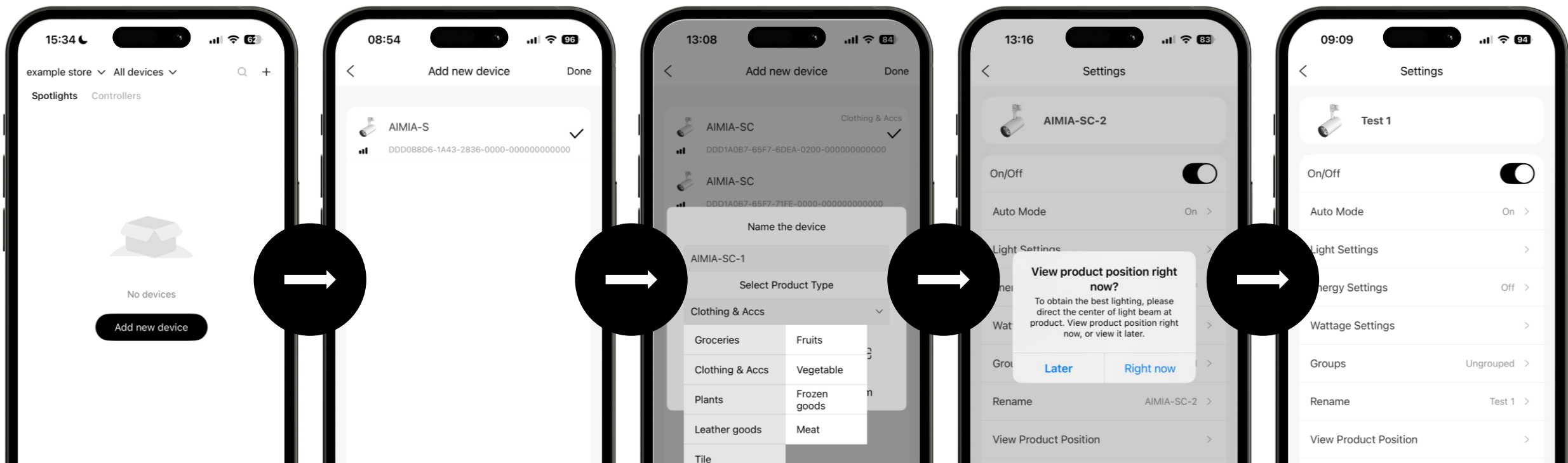
# Software-Update

1. When a "Software update" popup window appears, type → "Update".
2. Select the appropriate WiFi and enter the password
3. Tap "Update" to update the software of the luminaire to the latest version. Wait until the update is complete



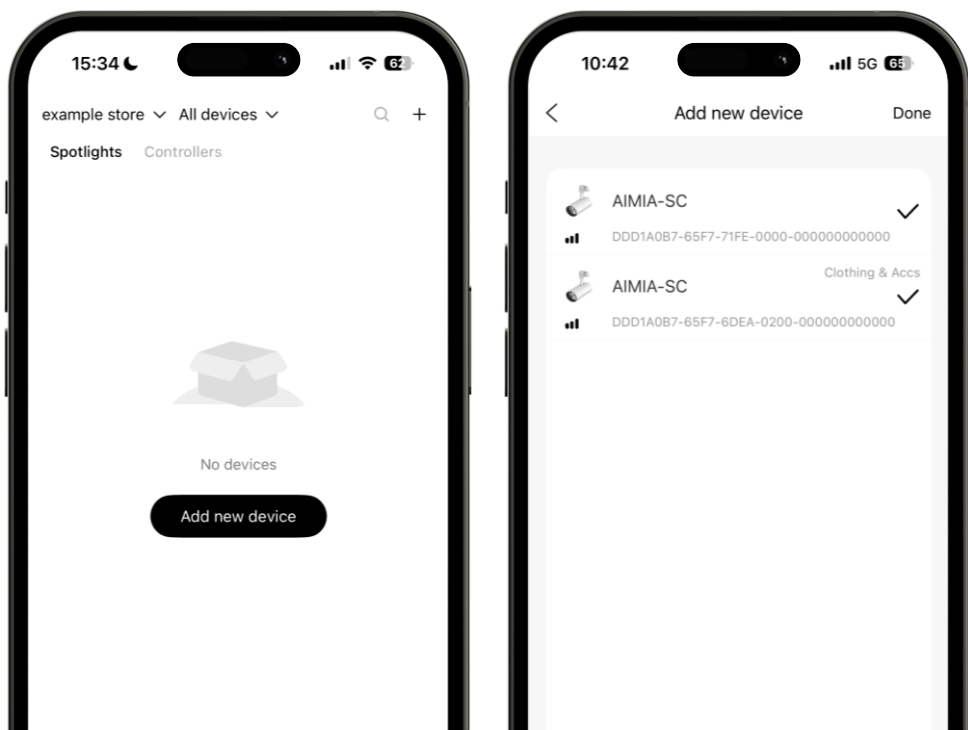
# Add new lights

1. Tap "add new device" or "+" at the top right of the app to display all spotlights within Bluetooth range
2. Tap on "+" after "Luminaire" → The spotlight flashes 5x → A name can be assigned to the spotlight and a purpose can be selected
3. Tap on "Confirm". The app shows whether the item is positioned correctly and checks whether it is in the centre of the image. If "Software update" is displayed, update the software first



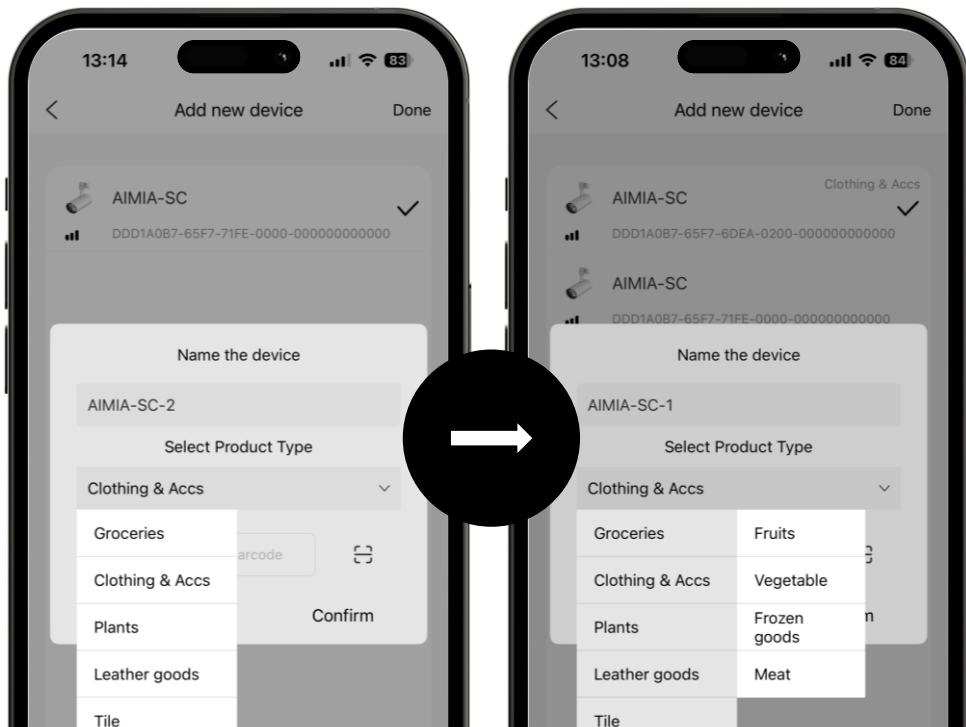
# Add multiple devices at one time

- Select multiple devices when adding
- Tap "Done" and App will add selected devices automatically



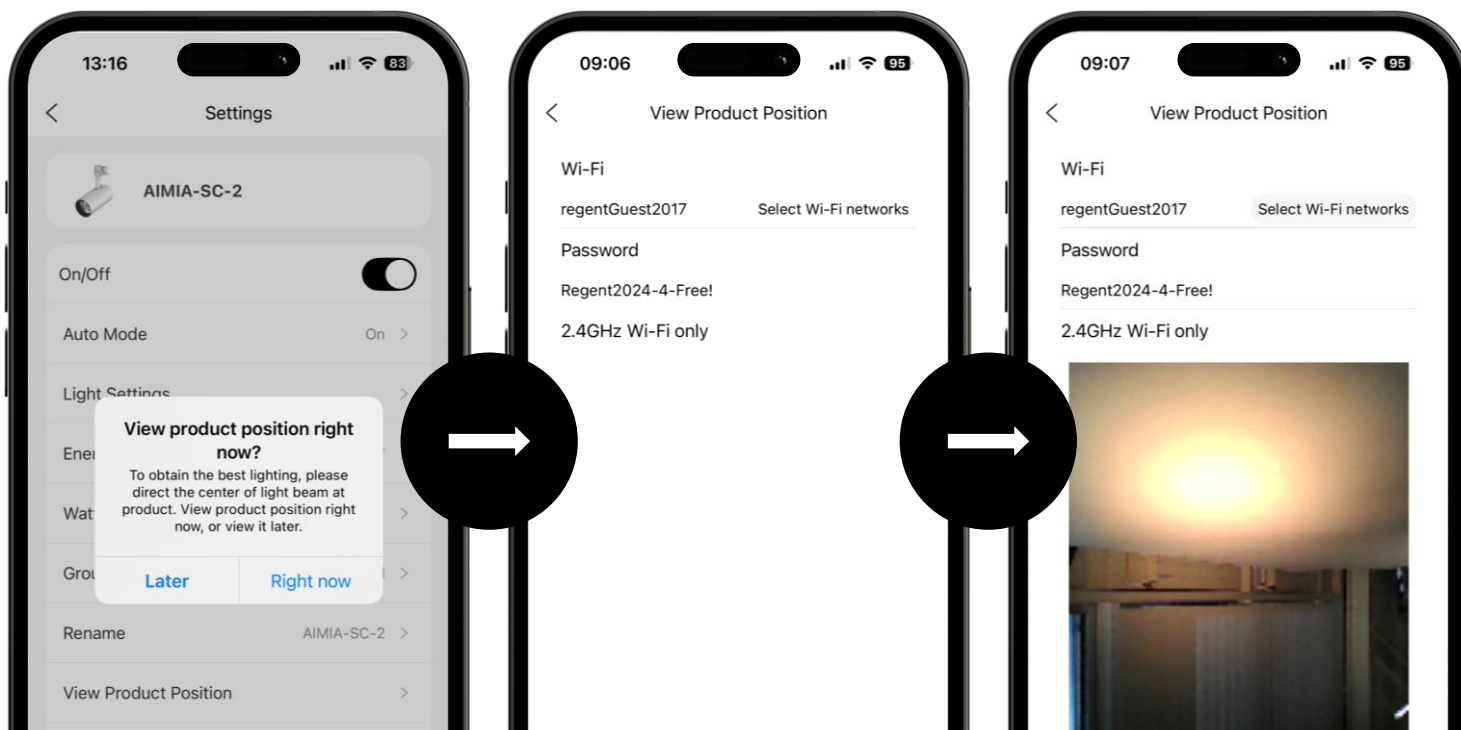
# Select application

There are 5 categories to choose from on the first level: Food, Clothing and Accessories, Plants, Leather, Tiles and Other Food have subordinate categories: Fruit, Vegetables, Frozen [seafood], Meat and Bakery  
If the category cannot yet be determined when setting up the luminaire, first select "Other" and specify later. The product category can be changed by tapping on "Auto Mode".



# Display goods item

1. Tap "Right now" → Select WiFi and enter password
2. Tap "View" to display an image of the product → Move the light or product so that the product is aligned in the centre of the image.



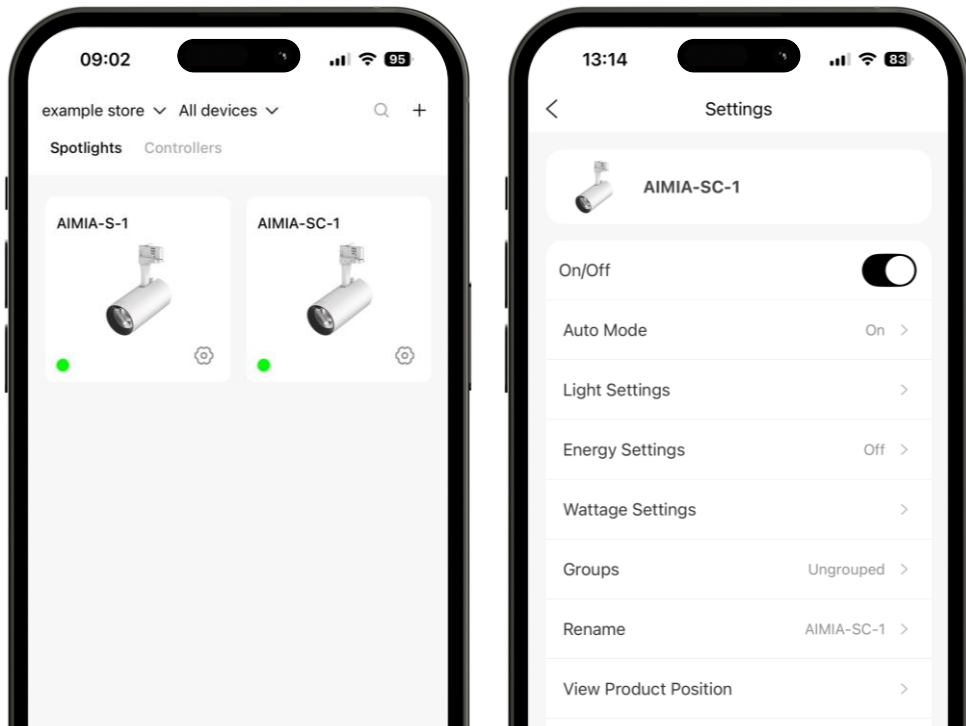
# Control of individual lights

Version: #1.0  
Software-Version: xxxxx



# Settings

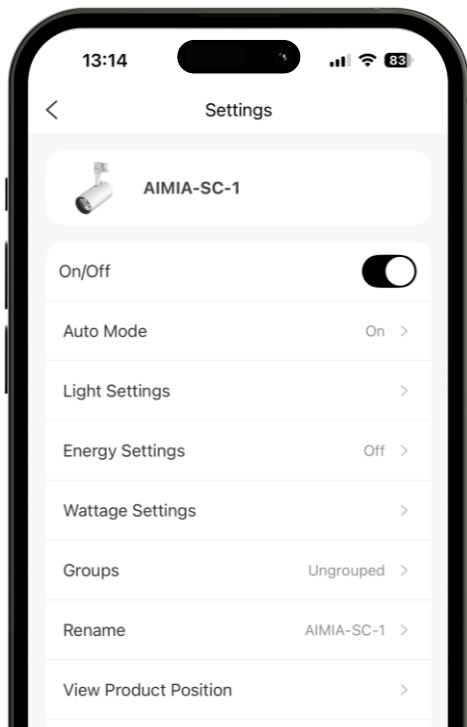
To access the setting options for an individual light → Tap the "Settings" symbol (small cogwheel at the top right)



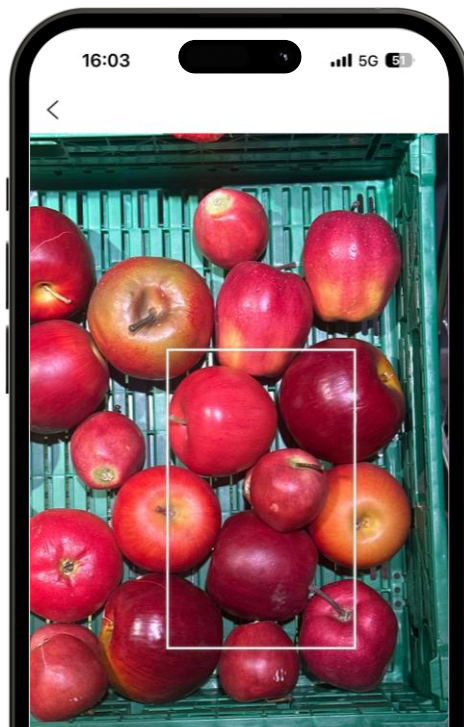
# Light settings

There are three ways to adjust the lighting:

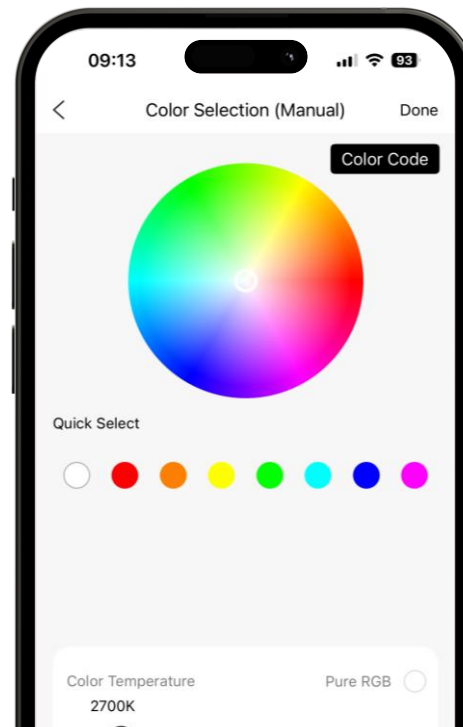
## Auto Mode



## Photo recording



## Manuell



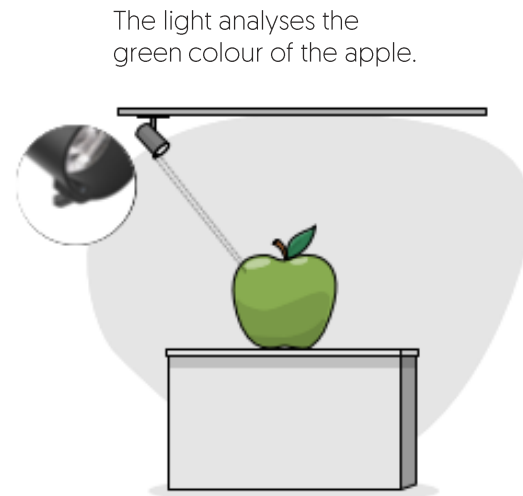
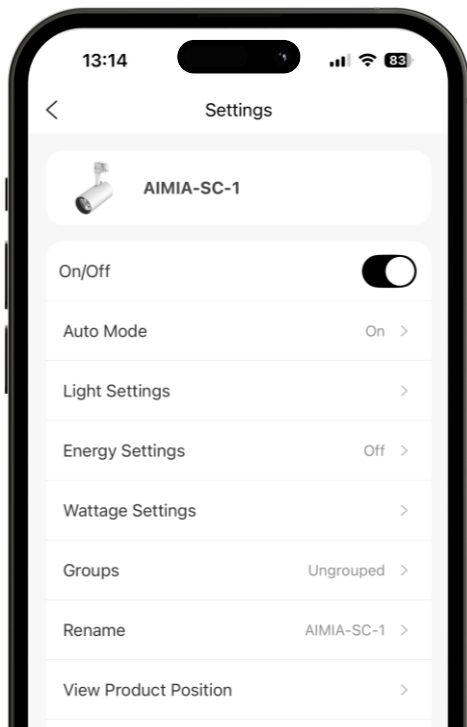
# Light settings

## Auto-Mode

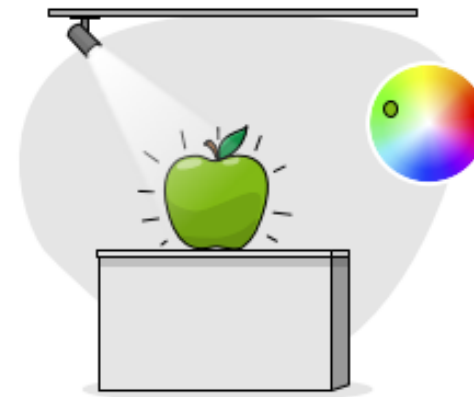
Auto mode is activated by default. The light recognises the product information and adjusts the light automatically. Using other light setting methods, such as "Take photo" or "Adjustment", switches the automatic mode off.

To use auto mode again → Activate "Auto mode" in the app

The sensor on the light records the product information every 20 minutes by default.



It automatically finds the best setting to highlight the colours of the product.



# Light settings

## Change detection interval and use application in auto mode

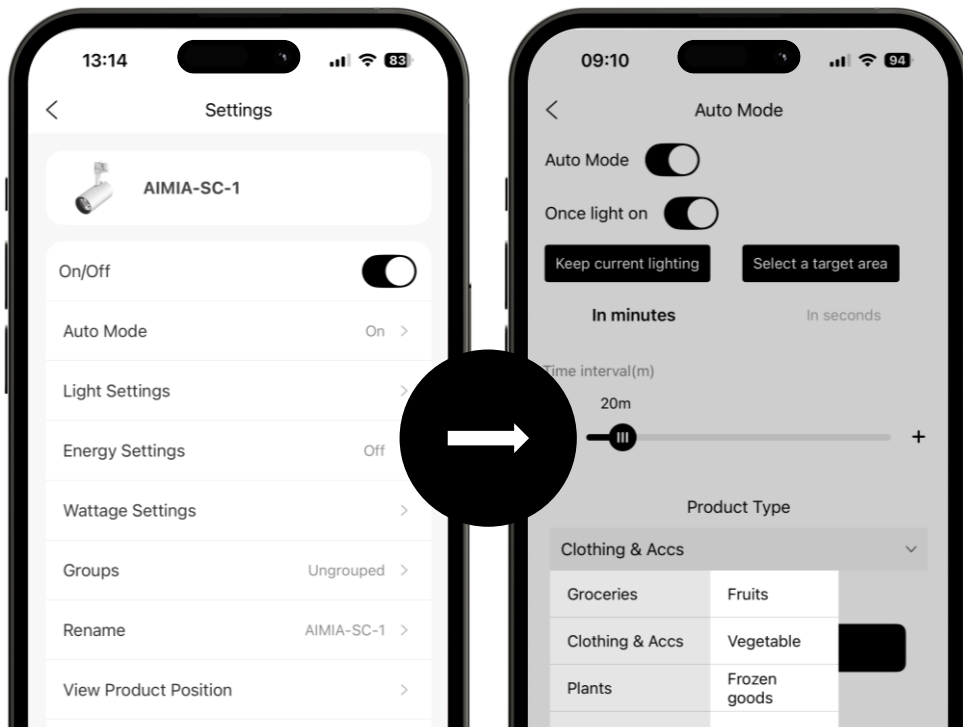
The standard detection interval is 20 minutes.

The intended use is "Clothing & accessories" by default.

Tap "Auto-Mode" to open the page for changing the sensor mode and application.

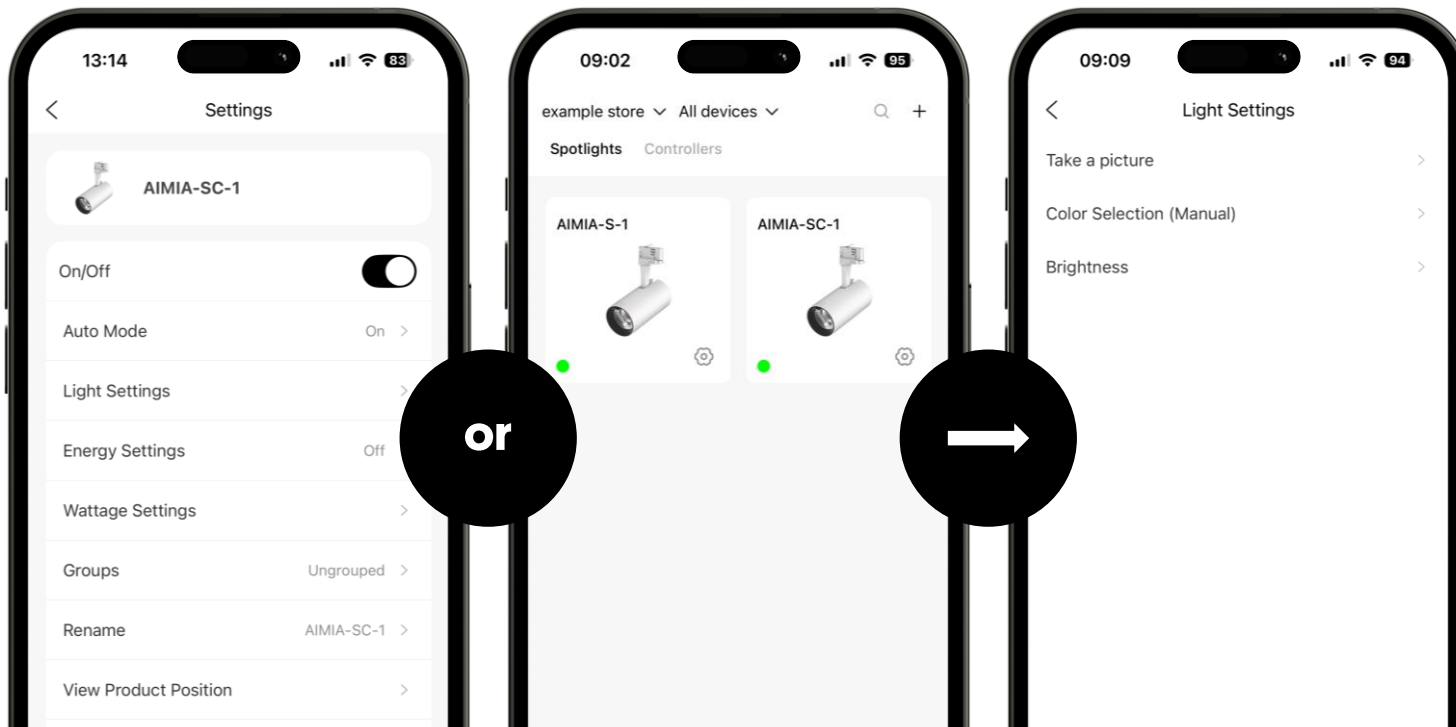
For normal use, it is recommended to set the time interval in minutes.

"In seconds" is suitable for demo and test purposes. The application purpose can also be customised here.



# Light settings

To use the "Take photo" or "Customisation" or "Brightness setting" function, tap on "Light setting" on the settings page or tap on the light symbol on the Devices page.



# Light settings

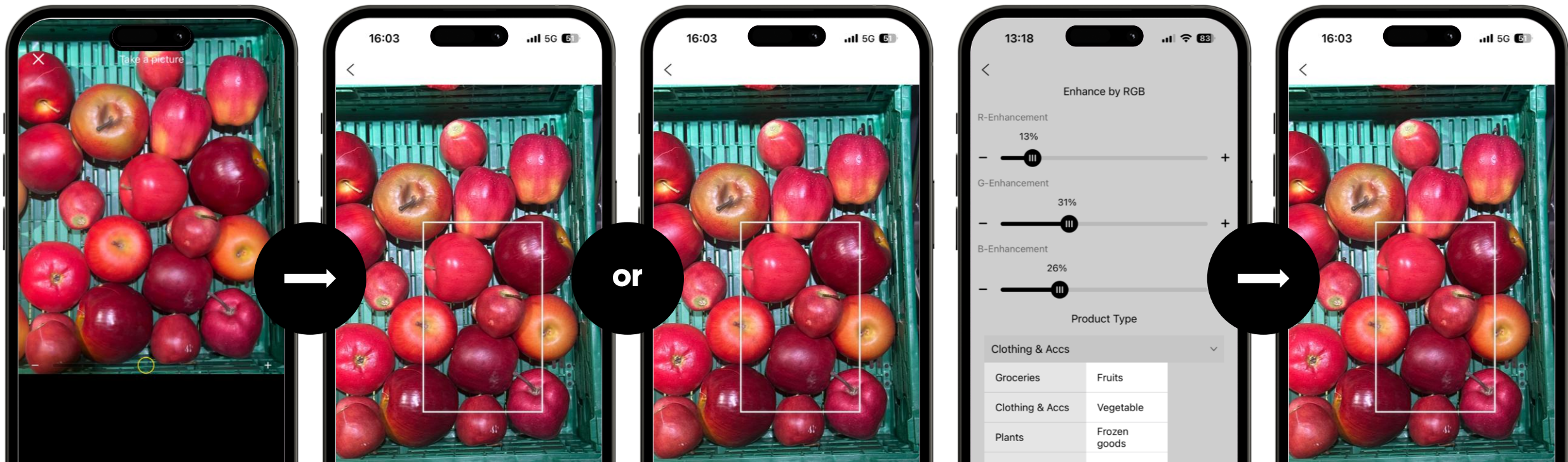
## Photo recording

Take a photo of the target product or select a photo from albums

Draw a frame in the photo or tap the target colour → The light changes accordingly. The brightness can be adjusted by dragging the slider at the bottom.

To get more options, tap → "More"

Tap on "Done" to save the setting and the "Auto mode" is automatically switched off.



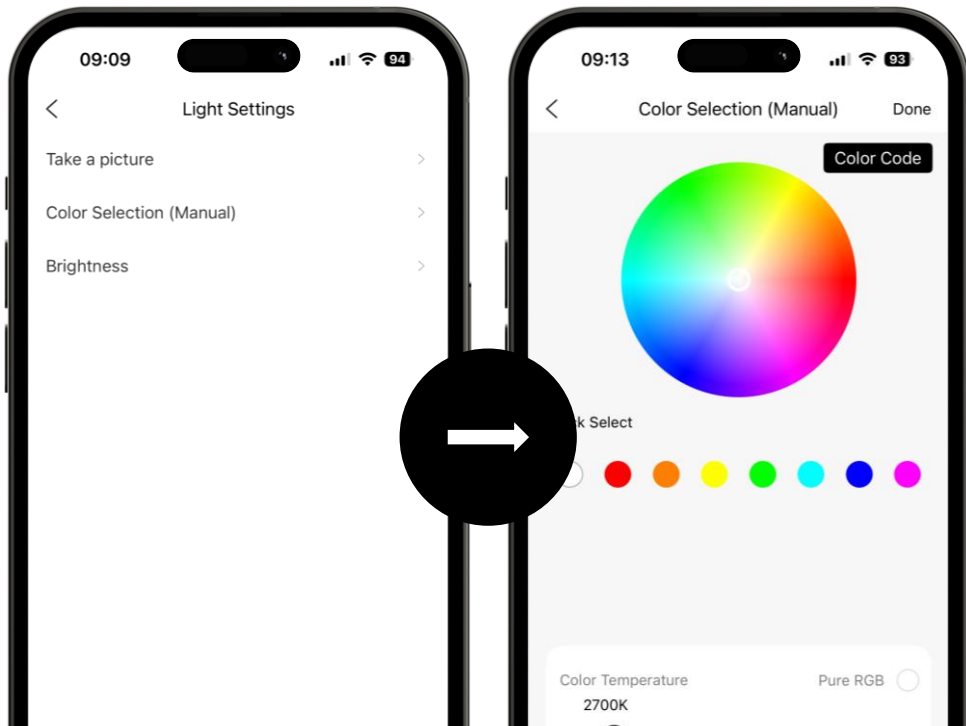
# Light settings

## Customization

On the "Light setting" page, tap on "Customisation"

The user can set the colour, saturation, colour temperature and brightness of the light

Tap on "Done" to save the setting. The "Auto mode" is switched off automatically.

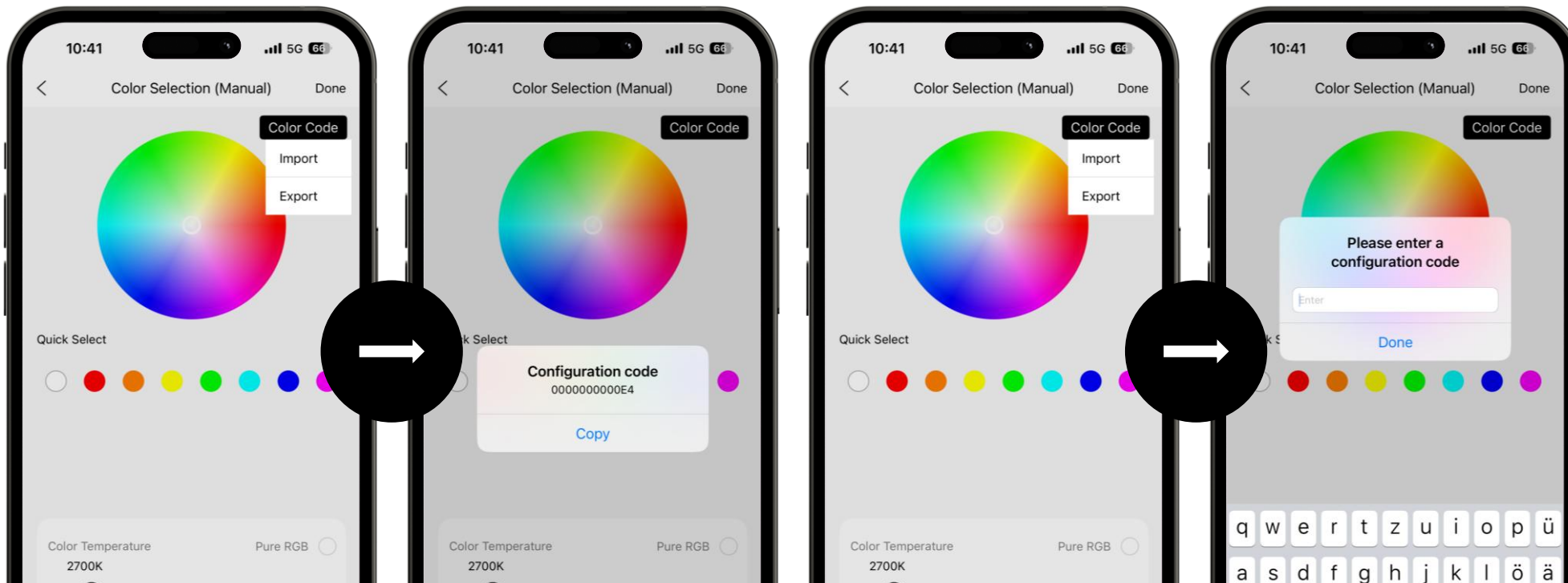




# Light settings

## Color Code

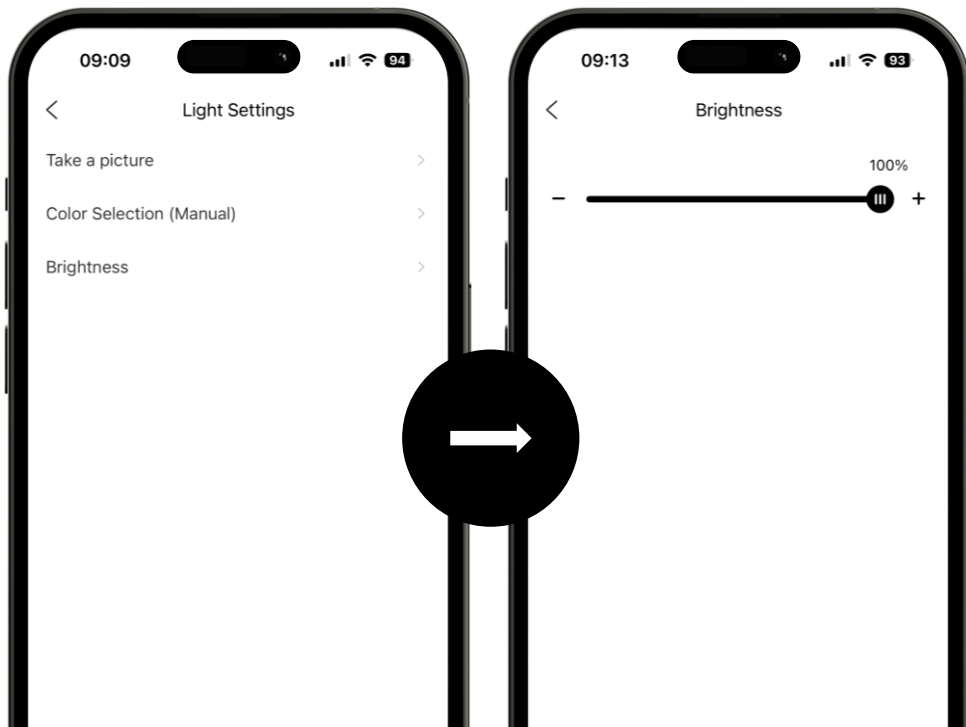
- Tap Color Code.
- Tap Export and generate a configuration code which can be replicated.
- On the page of same kind spotlights, tap Import and input the configuration code, will obtain the same lighting effect.



# Light settings

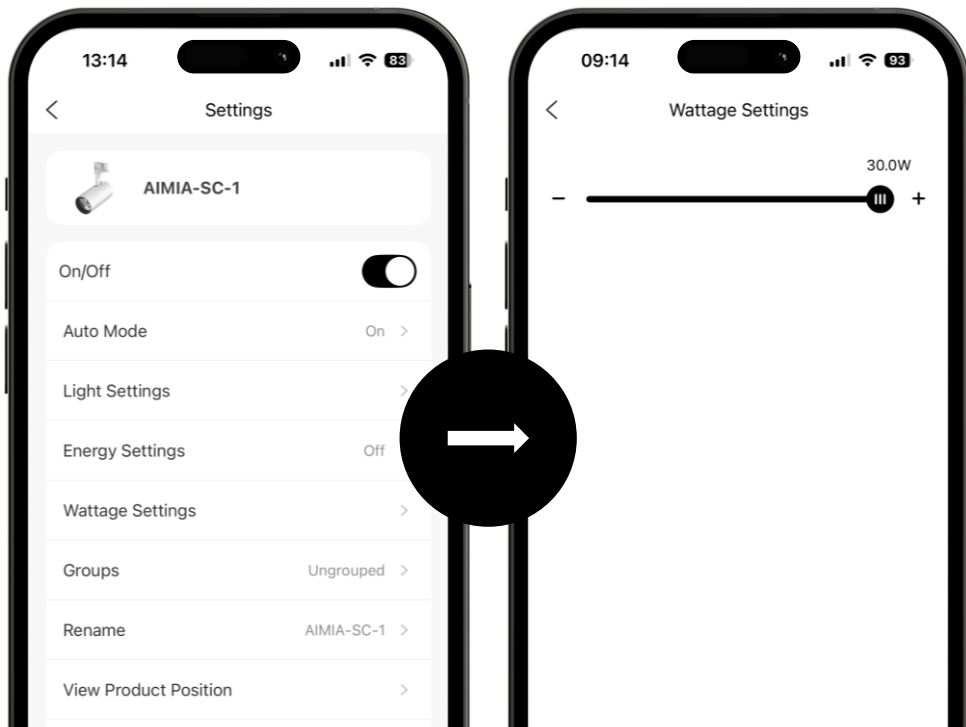
## Brightness

On the "Light setting" page, tap on "Brightness"  
Drag the slider to adjust the brightness of the light



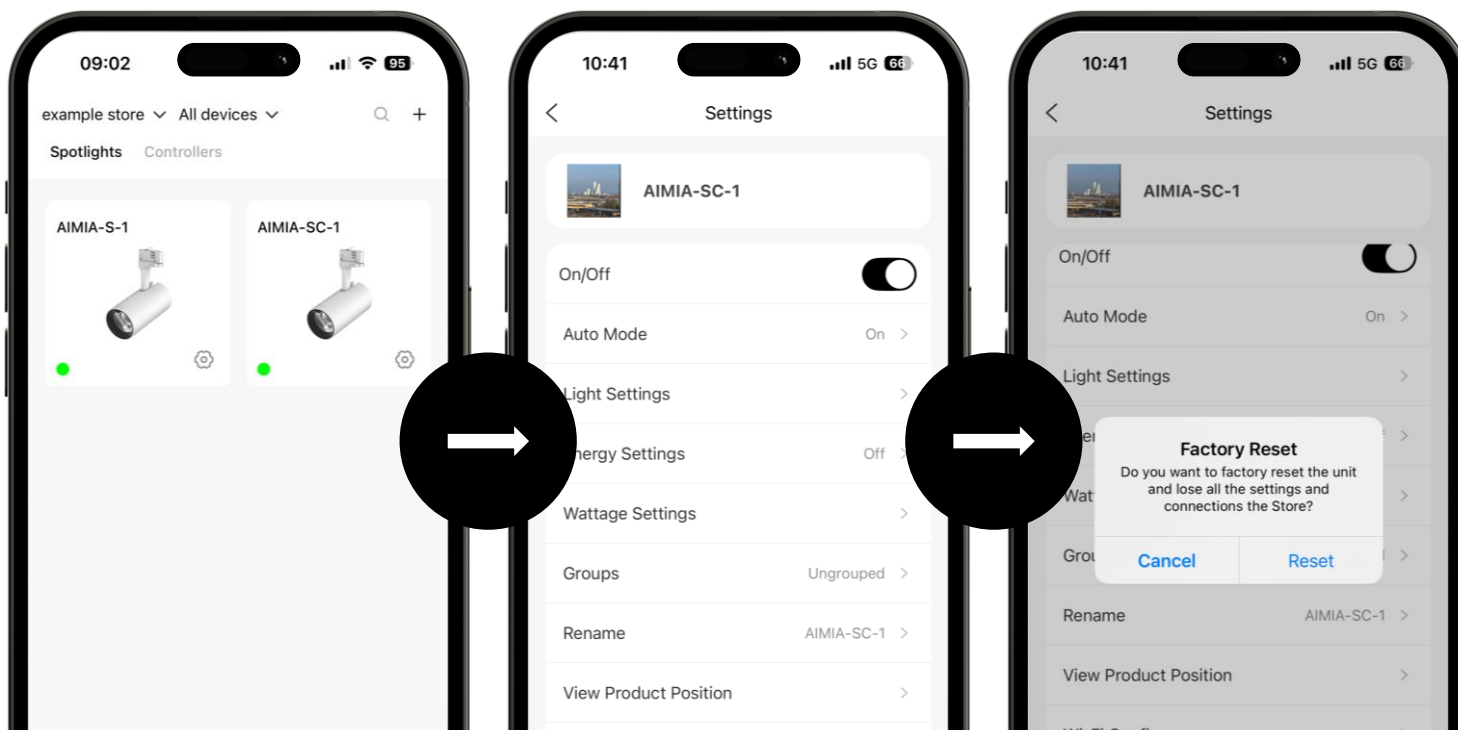
# Setting the power

On the "Settings" page, tap on "Power setting"  
Adjust the power of the light by dragging the slider



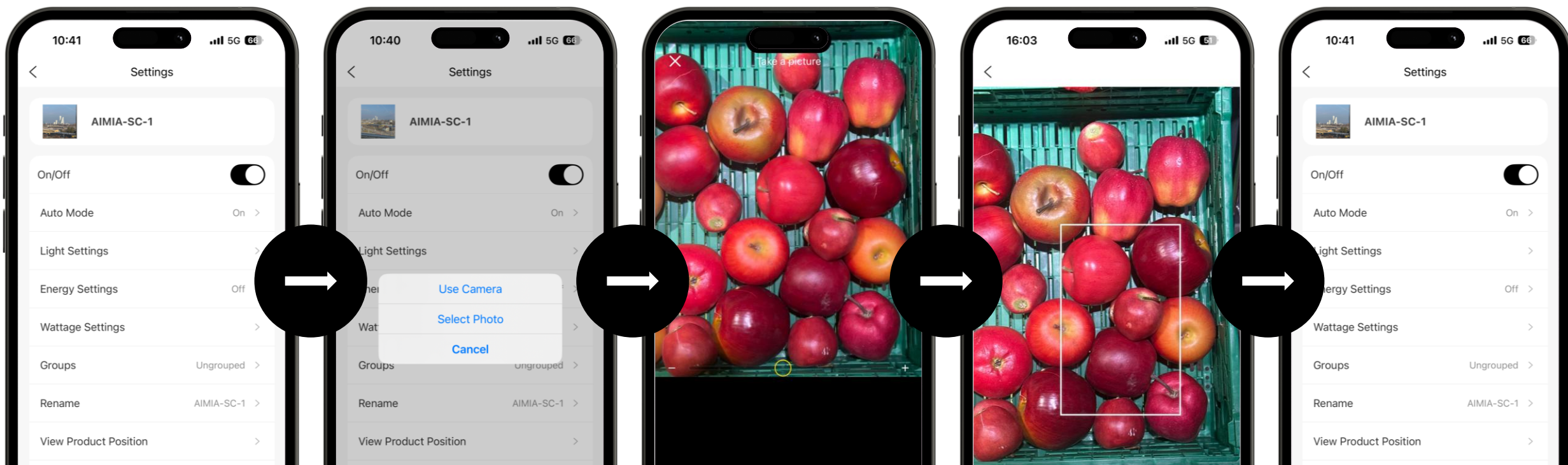
# Factory Reset

- Tap setting icon and enter the Settings page.
- Tap “Factory Reset.”
- Tap “Reset”. The device will be removed from the app and reset to factory default settings.



# Picture of device

- Tap the picture of device.
- Take a picture or choose a photo from albums.
- Tap "Choose" and the device icon will be set.

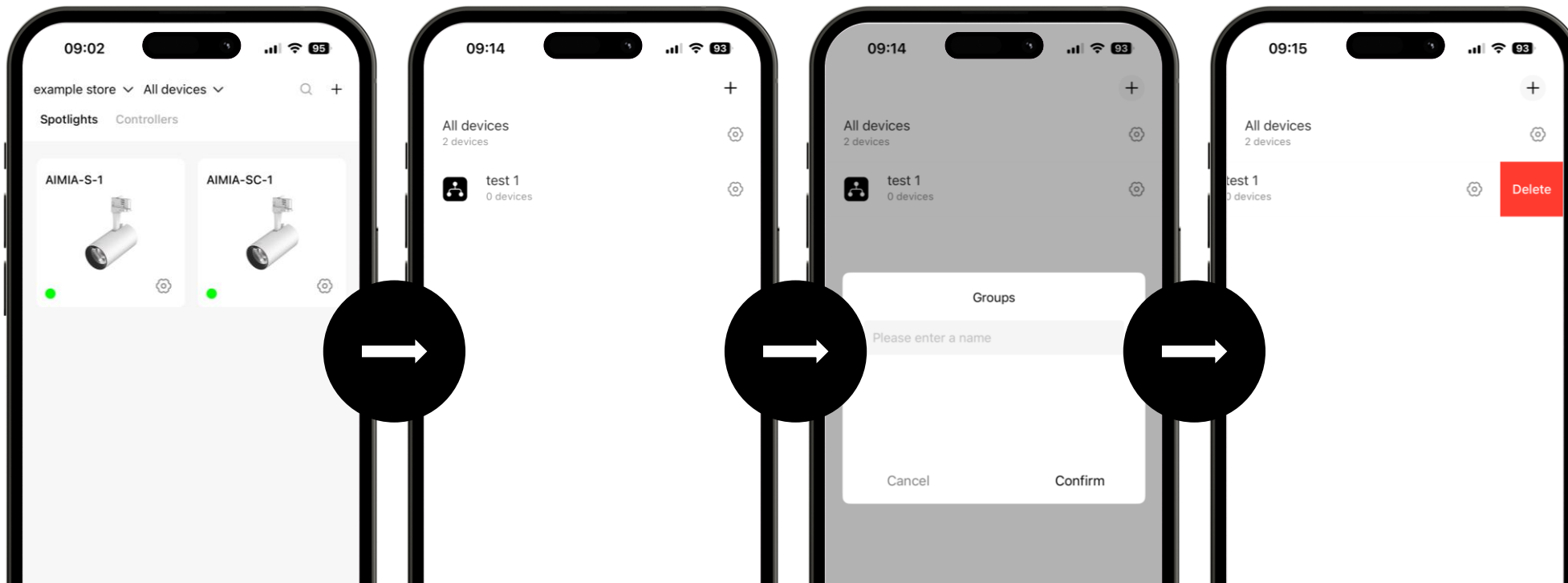


# Control of luminaire groups

Version: #1.0  
Software-Version: xxxxx

# Creating / deleting a luminaire group

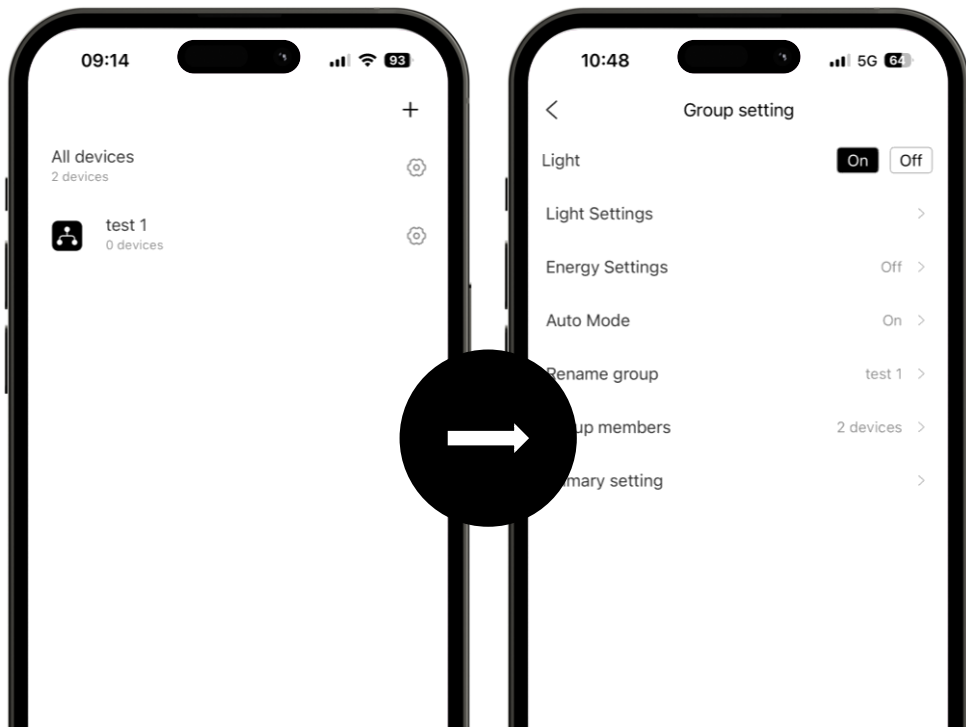
Tap on "+" → Enter the group name → Tap "Confirm" to add a group  
To delete a group from the list → Swipe to the left to delete it





# Group setting

On the Groups page, tap the settings icon to go to the group settings page



## Light On/Off

Use the app to switch all the lights in the group on or off. To avoid frequent switching on and off, a waiting time of three seconds is observed between switching on and off.

## Light setting

As with the individual device, but this point applies to all the lights in the group.

## Energy Saving Setting

As for the individual device, but this point here applies to all the lights in the group.

## Auto mode

As for the individual device, but this point here applies to all luminaires in the group.

## Rename Group

Rename the group.

## Group Members

Shows how many devices are in the group. Tap to display the device list.

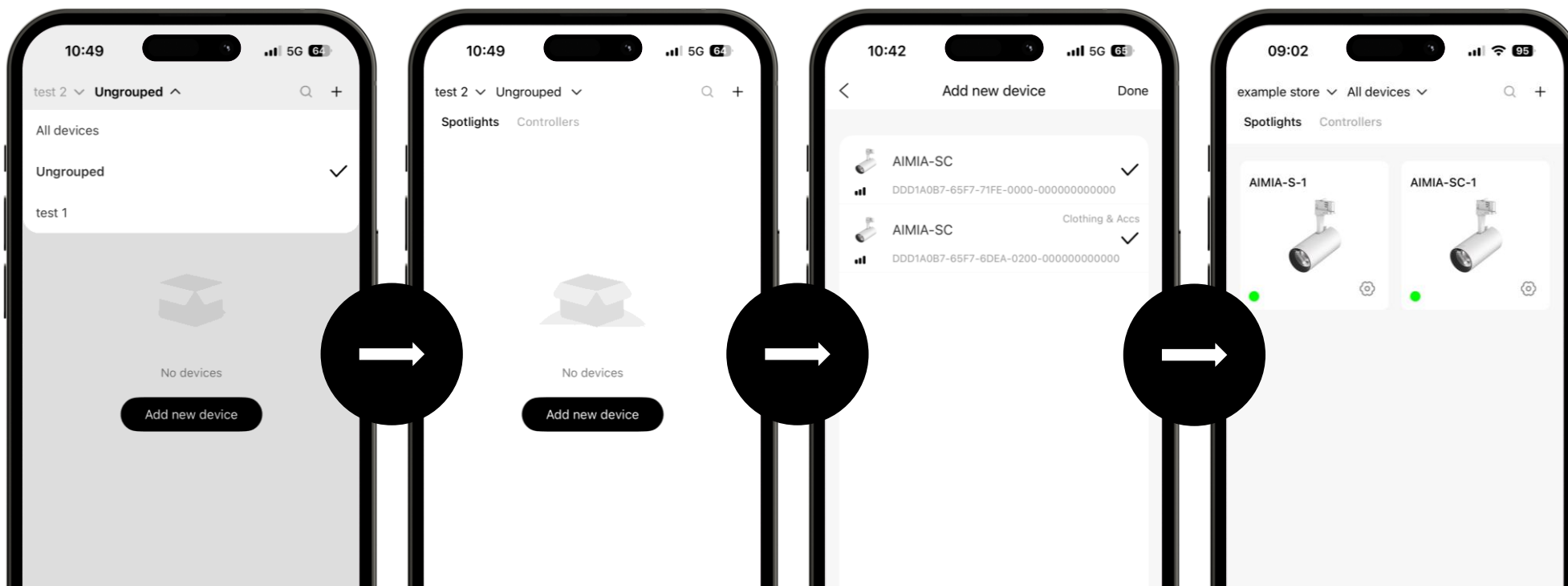
# Primary setting

- Tap "Primary setting" to get onto device list.
- Select a device as the Primary light and tap "Bind" to complete setting [non-sensor device cannot be used as Primary light].
- Set the Primary light to Auto Mode. When the Primary light detects target object, the light changes and the Secondary lights will follow. Set the Primary light to energy-saving mode . When the Primary light enters energy-saving mode, the Secondary lights will follow. That is, if you make any changes for the Primary light the Secondary lights will follow.



# Add devices to groups

- In Devices page select a group.
- Tap "Add new device" or "+" on the top right of the App to view a spotlights within Bluetooth reach.
- Choose device and Tap "Done"
- Devices selected will be added to the group.



# Group management

Tap "Group members" to access the device list

Tap "+" to add new luminaires to the group

Swipe to the left in the list to move the luminaire to another group or delete it from the current group.

To move or delete several luminaires at the same time → tap "..." in the top right-hand corner

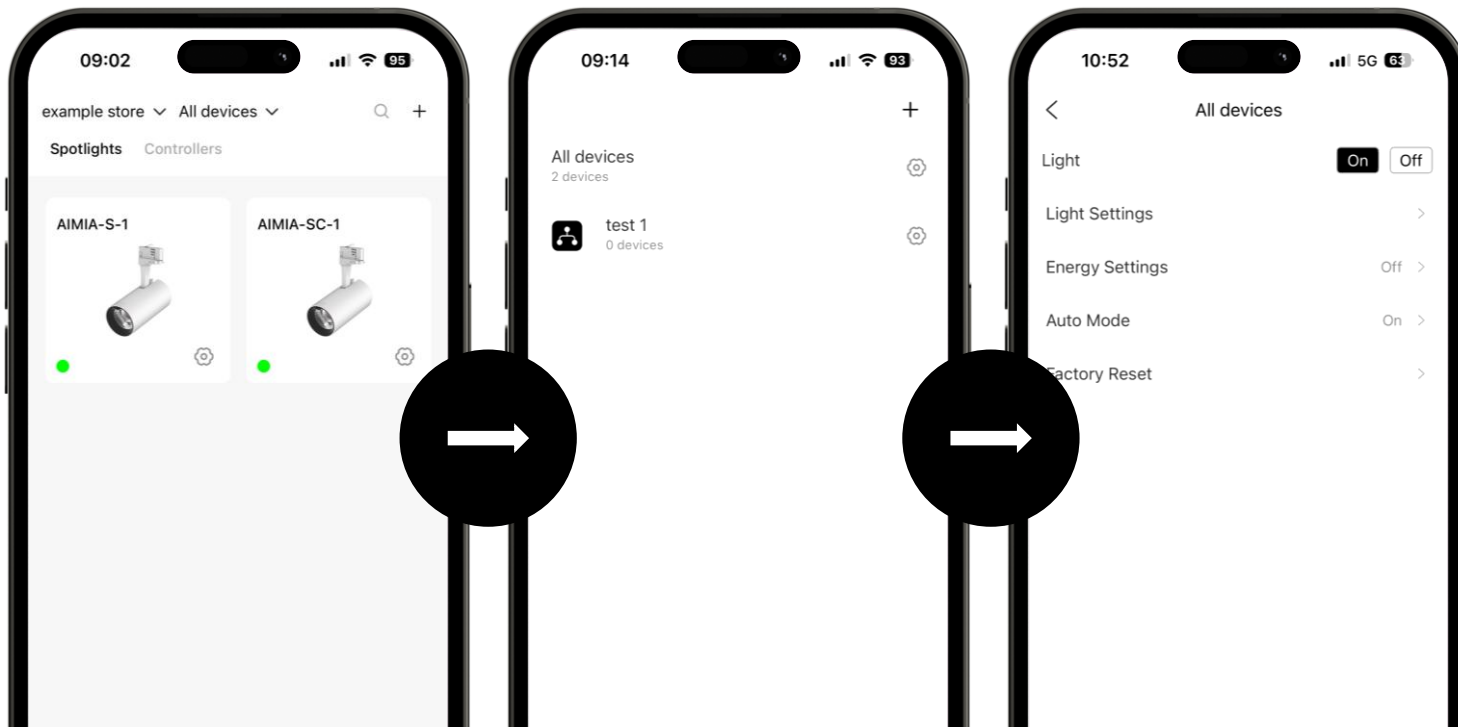


# Control of all lights

Version: #1.0  
Software-Version: xxxxx

# Control of all lights

Go to the "Groups" page → There is an "all devices" item at the top  
→ Tap on the settings icon on the "all devices" page



## Light On/Off

Switch all lights (including grouped and ungrouped lights) on or off via the APP. To avoid switching on and off too frequently, the system waits three seconds before switching on and off.

## Light Setting

The same as for the single device, but this element applies to all lights (including grouped and ungrouped).

## Energy Saving setting

The same as for the single device, but this element applies to all luminaires (including grouped and ungrouped).

## Auto mode

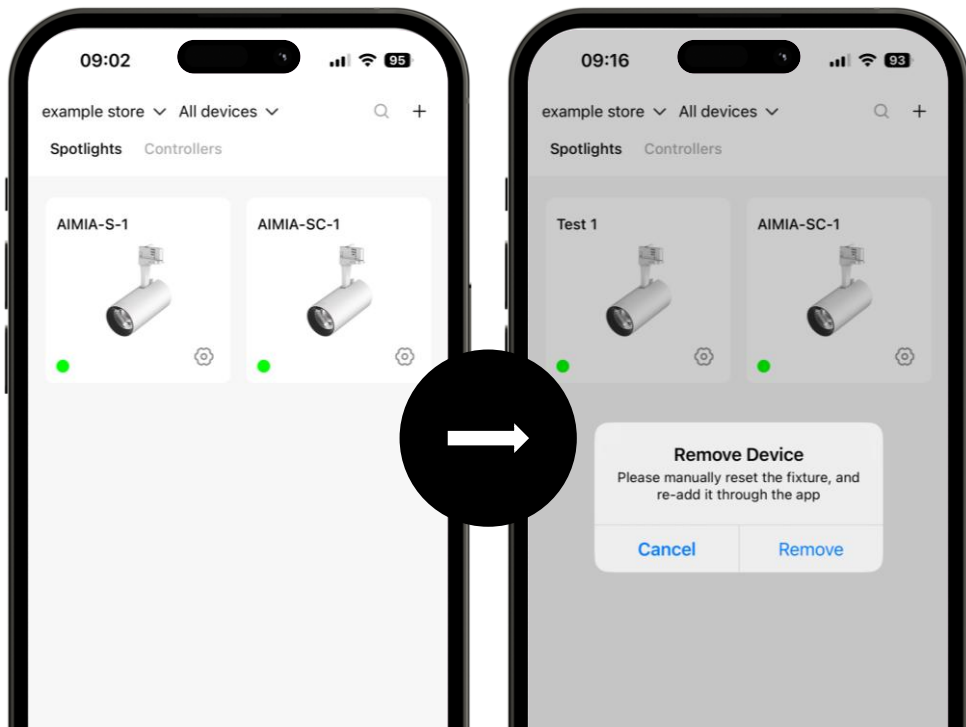
The same as for the individual device, but this element applies to all luminaires (including grouped and ungrouped).

# Remove a light from the app

Tap and hold a luminaire symbol until the dialogue box appears.

Select "Remove" to remove lights from the app [To cancel the process: tap "Cancel"]

Note: Use this function very carefully! If the luminaire can be connected to the app, remove it with "Reset settings" on the "Settings" page. If you remove a light in this way, the only way to reconnect it is to physically reset it and add it again.



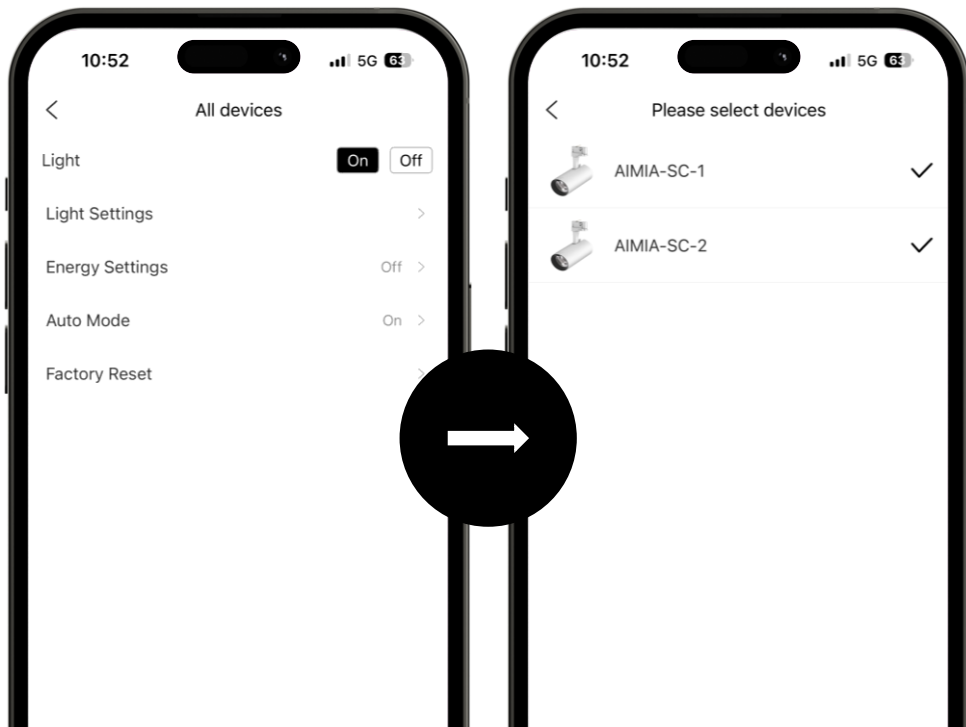
## 7 steps to reconnect devices that have been accidentally removed from the app or cannot be connected.

1. switch off the device
2. wait half a second
3. switch on the device
4. wait half a second
5. switch off the device
6. wait half a second
7. switch on the device

**Note:** This procedure only applies to the lights that cannot be connected to the app. Do not carry out this procedure for other devices, otherwise the settings will be lost.

# Reset multiple devices at one time

- In All devices page, tap "Factory Reset"
- Select devices and tap Factory Reset.





# Status display and troubleshooting

Status	Note
Connecting the device	The light flashes 5 times
Device connection faulty	App displays Time Out
Device successfully connected	The light flashes 5 times
The light changes automatically	The app displays «Auto Mode»

Problem	Note	Solution
Connection error	Time out	<ol style="list-style-type: none"> <li>1. make sure that the device is switched on.</li> <li>2. Bluetooth out of range, please move closer.</li> <li>3. the Bluetooth on your smartphone or Ipad is switched off.</li> <li>4. if you still cannot find a solution, please contact The Light Group</li> </ol>
Inconsistencies	The lighting does not match the goods	<ol style="list-style-type: none"> <li>1. please place the goods in the center of the light cone.</li> <li>2. switch on the "Auto mode" or set the light with the app.</li> <li>3. the color sensor of the light does not work so well if the goods are too far away or too small. Please use the app to adjust the light.</li> <li>4. if still not solved, please contact The Light Group.</li> </ol>



PEOPLE LIGHT OUR WAY

Further information at [regent.ch](https://www.regent.ch)

[info.bs@regent.ch](mailto:info.bs@regent.ch)

[#peoplelightourway](https://www.instagram.com/peoplelightourway)

