



SLASH 2

With its purist aesthetics, SLASH 2 can be perfectly integrated into contemporary architecture. The uniform, slender lines and the reduced design without visible screws emphasise this incomparable elegance. The high-quality processed aluminium profile comes into its own especially with the pendant and surface-mounted versions, whereby SLASH 2 is also available as a recessed luminaire. Furthermore, the luminaire convinces with its energy efficiency and the pre-wired ICT® light strip, which can be individually replaced in case of maintenance. In any version, it is a timeless appearance and provides uniform, pure light of the highest quality.

FEATURES

Streamlined design makes for perfect integration into ceiling architecture
Uniform lines of light
No visible screws
Pre-wired batten luminaire with ICT® (Instant Contact Technology)
LED batten luminaire replaceable on site

SPECIFICATIONS

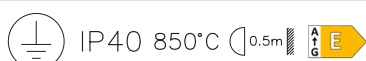
Available as recessed ceiling and recessed wall luminaire, as ceiling and wall mounted luminaire, as channel lighting system and, with appropriate accessories, as pendant luminaire
Direct light emission
Luminaire profile made of aluminium natural anodised
Cut-in contact clips, powder-coated white
Electronic control integrated
support profile and system components to be ordered separately
Versions with emergency unit available
ON/OFF + DALI

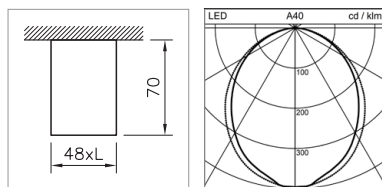
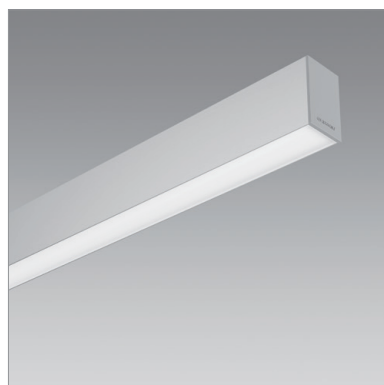
TECHNICAL DATA

System power	7-25 W
Luminous flux of luminaire	510-2450 lm
Colour temperature	3000 K, 4000 K
Colour Rendering Index (CRI)	Ra >80
Maintained luminous flux	L80 50'000 h
Protection class	I
Ingress Protection	IP20
Photobiological safety	risk group 0, no risk

APPLICATION AREAS

Office & Education: offices, reception rooms, counters
Retail & Hospitality: hotels, restaurants



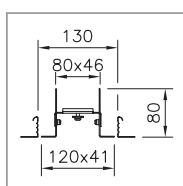
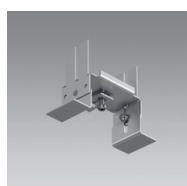


CEILING AND WALL MOUNTED LUMINAIRE SLASH 2

Length	System power	Luminous flux of luminaire	Colour temperature	Light control	Notes	Ref. n°
602 mm	7 W	530 lm	4000 K	ON/OFF	xHE	2006.3897
602 mm	7 W	530 lm	4000 K	DALI	xHE	2006.3898
602 mm	7 W	510 lm	3000 K	ON/OFF	xHE	2006.3895
602 mm	7 W	510 lm	3000 K	DALI	xHE	2006.3896
602 mm	8.5 W	710 lm	4000 K	ON/OFF	HE	2006.3901
602 mm	8.5 W	710 lm	4000 K	DALI	HE	2006.3902
602 mm	8.5 W	680 lm	3000 K	ON/OFF	HE	2006.3899
602 mm	8.5 W	680 lm	3000 K	DALI	HE	2006.3900
602 mm	11 W	980 lm	4000 K	ON/OFF	HPE	2006.3905
602 mm	11 W	980 lm	4000 K	DALI	HPE	2006.3906
602 mm	11 W	930 lm	3000 K	ON/OFF	HPE	2006.3903
602 mm	11 W	930 lm	3000 K	DALI	HPE	2006.3904
1187 mm	11 W	1060 lm	4000 K	ON/OFF	xHE	2006.3909
1187 mm	11 W	1060 lm	4000 K	DALI	xHE	2006.3910
1187 mm	11 W	1000 lm	3000 K	ON/OFF	xHE	2006.3907
1187 mm	11 W	1000 lm	3000 K	DALI	xHE	2006.3908
1187 mm	14 W	1420 lm	4000 K	ON/OFF	HE	2006.3913
1187 mm	14 W	1420 lm	4000 K	DALI	HE	2006.3914
1187 mm	14 W	1340 lm	3000 K	ON/OFF	HE	2006.3911
1187 mm	14 W	1340 lm	3000 K	DALI	HE	2006.3912
1187 mm	19 W	1940 lm	4000 K	ON/OFF	HPE	2006.3917
1187 mm	19 W	1940 lm	4000 K	DALI	HPE	2006.3918
1187 mm	19 W	1840 lm	3000 K	ON/OFF	HPE	2006.3915
1187 mm	19 W	1840 lm	3000 K	DALI	HPE	2006.3916
1187 mm	13 W	1060 lm	4000 K	DALI	xHE NOT 3h	2006.3920
1187 mm	13 W	1000 lm	3000 K	DALI	xHE NOT 3h	2006.3919
1187 mm	16 W	1420 lm	4000 K	DALI	HE NOT 3h	2006.3922
1187 mm	16 W	1340 lm	3000 K	DALI	HE NOT 3h	2006.3921
1187 mm	21 W	1940 lm	4000 K	DALI	HPE NOT 3h	2006.3924
1187 mm	21 W	1840 lm	3000 K	DALI	HPE NOT 3h	2006.3923
1480 mm	13 W	1320 lm	4000 K	ON/OFF	xHE	2006.3927
1480 mm	13 W	1320 lm	4000 K	DALI	xHE	2006.3928
1480 mm	13 W	1260 lm	3000 K	ON/OFF	xHE	2006.3925
1480 mm	13 W	1260 lm	3000 K	DALI	xHE	2006.3926
1480 mm	17 W	1780 lm	4000 K	ON/OFF	HE	2006.3931
1480 mm	17 W	1780 lm	4000 K	DALI	HE	2006.3932
1480 mm	17 W	1680 lm	3000 K	ON/OFF	HE	2006.3929
1480 mm	17 W	1680 lm	3000 K	DALI	HE	2006.3930
1480 mm	23 W	2450 lm	4000 K	ON/OFF	HPE	2006.3935

CEILING AND WALL MOUNTED LUMINAIRE SLASH 2

Length	System power	Luminous flux of luminaire	Colour temperature	Light control	Notes	Ref. n°
1480 mm	23 W	2450 lm	4000 K	DALI	HPE	2006.3936
1480 mm	23 W	2300 lm	3000 K	ON/OFF	HPE	2006.3933
1480 mm	23 W	2300 lm	3000 K	DALI	HPE	2006.3934
1480 mm	15 W	1320 lm	4000 K	DALI	xHE NOT 3h	2006.3938
1480 mm	15 W	1260 lm	3000 K	DALI	xHE NOT 3h	2006.3937
1480 mm	19 W	1780 lm	4000 K	DALI	HE NOT 3h	2006.3940
1480 mm	19 W	1680 lm	3000 K	DALI	HE NOT 3h	2006.3939
1480 mm	25 W	2450 lm	4000 K	DALI	HPE NOT 3h	2006.3942
1480 mm	25 W	2300 lm	3000 K	DALI	HPE NOT 3h	2006.3941



BRACKET KIT SLASH 2

for plaster ceilings, for support profiles with or without cover edge,
max. every 1.5 m

Notes	Ref. n°
	1005.9700



WIRE CORD SUSPENSION

Load max. max. 20 kg, recommended: all 1.5 m

Notes	Ref. n°
2 pc. kit with cable clamp	1005.9698
1 piece	1000.5435



CABLE KIT

Length = 2000 mm, transparent, for max. 1.5 m suspension

Notes	Ref. n°
3 poles	1008.1448
5 poles	1008.1450