



Zug LED

Tubular luminaire

There is hardly any other luminaire on the market that can compete with the robustness and elegance of Zug LED. The initial impression it generates is that of a tubular luminaire for industrial applications: offering a range of lumen packages and easy to install and use. And yet at second glance it becomes clear that this luminaire is a true architectural highlight for decorative technical solutions in interior and exterior spaces. Zug LED incorporates robustness at its most beautiful without compromising on the light quality. And not even a high-pressure cleaner can alter that.

FEATURES

Meets the requirements for ingress protection ratings IP65/66/67/68 (20 m), incl. IP69K when using high-pressure cleaning equipment

Suitable for interior and exterior application

For ceiling and wall mounting

Protective tube with a diameter of 75 mm made of opal PMMA

With integral through-wiring

Can be mounted using the fastening clips supplied in a variety of ways

TECHNICAL DATA

System power: 20 W / 27 W / 34 W / 30 W / 42 W / 53 W

Luminous flux of luminaire: 3300 lm / 4500 lm / 5700 lm / 5100 lm / 7100 lm / 7700 lm

Colour temperature: 4000 K

Colour rendering index: CRI > 80

Maintained luminous flux: L70 50'000 h

Protection class: Protection class II

Ingress Protection (IP): IP66

SPECIFICATIONS

ON/OFF

Operating unit integrated

Impact strength IK10 (PC) or IK09 (PMMA)

Operating temperature range -25 to +40 °C

Luminaire with limited surface temperatures

FIELDS OF APPLICATION

Industry: industrial applications, areas with special protection requirements, working/inspection pits, unprotected outdoor areas, wet rooms, cold storage facilities

Zug LED

230V



IP66

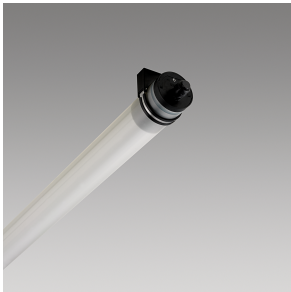
IP67

IP69K

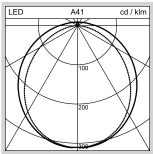
IK09



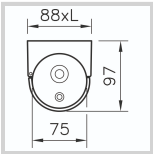
IK10



A



B



C

Article number	Info	Length	Notes	
ZUG TL m1200 LED3300-840 RB PMMA ONF 1004.4214	3300 lm 4000 K neutral white	1410 mm	Luminaire tube made of PMMA, transparent opalised	A, B, C
ZUG TL m1200 LED4500-840 RB PMMA ONF 2000.4023	4500 lm 4000 K neutral white	1410 mm	Luminaire tube made of PMMA, transparent opalised	A, B, C
ZUG TL m1200 LED5700-840 RB PMMA ONF 2000.1040	5700 lm 4000 K neutral white	1410 mm	Luminaire tube made of PMMA, transparent opalised	A, B, C
ZUG TL m1500 LED5100-840 RB PMMA ONF 2000.5282	5100 lm 4000 K neutral white	1710 mm	Luminaire tube made of PMMA, transparent opalised	A, B, C
ZUG TL m1500 LED7100-840 RB PMMA ONF 2000.1048	7100 lm 4000 K neutral white	1710 mm	Luminaire tube made of PMMA, transparent opalised	A, B, C
ZUG TL m1500 LED7700-840 RB PC ONF 2000.5290	7700 lm 4000 K neutral white	1710 mm	Luminaire tube made of PC, tropal	A, B, C